
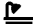





62 Yoorala Road Yarrowonga Park NSW

3  2  3 

Set on the sandy shores of Lake Macquarie sits this opportunity to secure a waterfront lifestyle that is good for the soul.

This architecturally-designed and master-built home is brilliantly complimented by one of Lake Macquarie's finest stretches of waterfront reserves providing views of the lake and Watagan Mountains. This lifestyle is waiting for you to take advantage of.

Your new home offers a flexible lakeside lifestyle with a level 803m2 block providing the perfect base for lakeside activities such as fishing, kayaking, boating and relaxing.

Features include, but are not limited to:

[For full version visit the website](https://www.ellejayne.com.au)

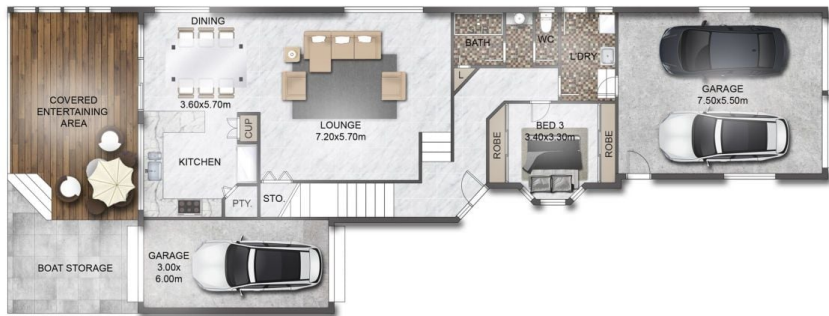
Type : House
Price : \$ 1,800,000
Land Size : 803 sqm
View : <https://www.ellejayne.com.au/sale/nsw/lake-macquarie-west/yarrowonga-park/residential/house/6830462>



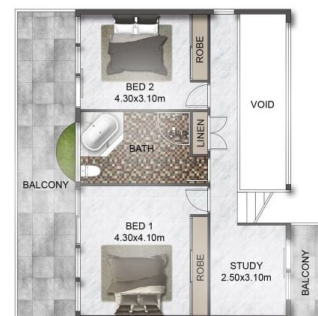
Sally Wrigley
1300 322 366



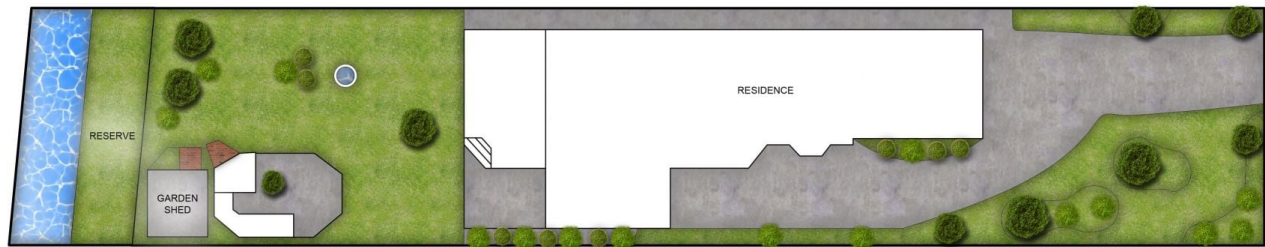
Jayse Russo
1300 322 366



LOWER LEVEL



UPPER LEVEL



SITE PLAN

This floor plan including furniture, fixture measurements and dimensions are approximate and for illustrative purposes only. BoxBrownie.com gives no guarantee, warranty or representation as to the accuracy and layout. All enquiries must be directed to the agent, vendor or party representing this floor plan.

62 Yoorala Road, Yarrowonga Park