



## 20 Stan Crescent Bonnells Bay NSW

4  2  4 

If a stylish home in a stylish estate is your thing, this stylish home in a stylish estate may just be the perfect fit for you!

Ideally located in the Aquilo Estate in Bonnells Bay, this 2016-built stunner was designed for luxurious yet practical single level living in a central location only minutes from Morisset and the M1 Motorway.

Complimenting a beautifully designed and light-filled home is a high-end shed with easy side access (3.4 metres) via the electric gates on the second driveway and through the heightened carport (3.97 metres), perfect for secure storage of boats, caravans, or the project car.

Features include, but are not limited to:

? Four sizeable bedrooms, all appointed with built-in robes,

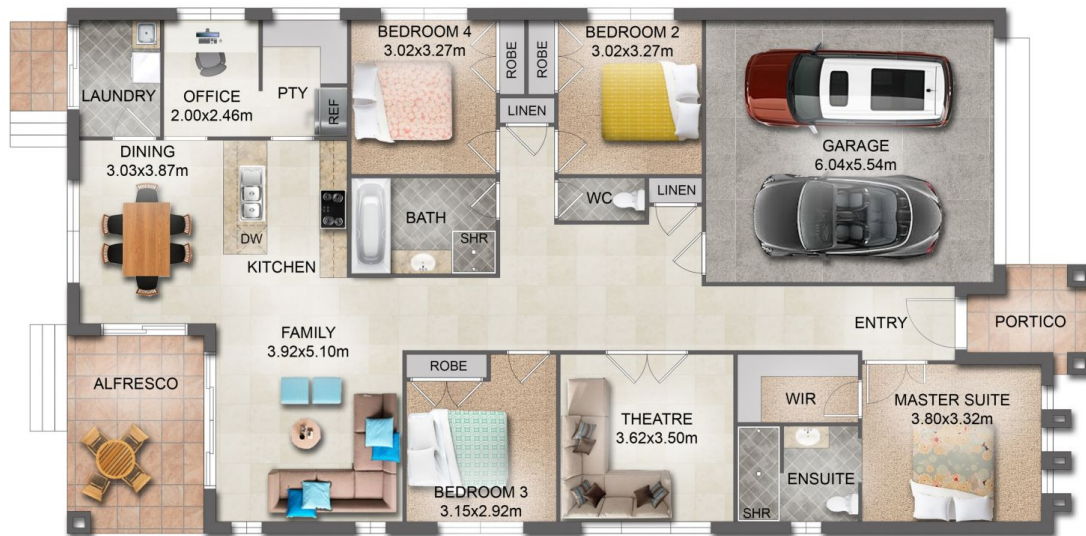
**Price** : \$ 995,000  
**Land Size** : 585 sqm  
**View** : <https://www.ellejayne.com.au/sale/nsw/lake-macquarie-west/bonnells-bay/residential/home/7972071>



**Ben Wrigley**  
1300 322 366



**Sally Wrigley**  
(02) 4973 2775



FLOOR PLAN

This floor plan including furniture, fixture measurements and dimensions are approximate and for illustrative purposes only. BoxBrownie.com gives no guarantee, warranty or representation as to the accuracy and layout. All enquiries must be directed to the agent, vendor or party representing this floor plan.

20 Stan Crescent, Bonnells Bay