






**197 Owens Road Martinsville NSW**

4  3  6 

Introducing Highveld Estate - an exceptional opportunity to own one of Martinsville Valley's most coveted estates. Spanning over 67 acres of pristine land, this remarkable property offers breathtaking panoramic views of the surrounding valley and mountains, framed by the iconic Watagan National Park. Here, tranquillity, beauty, and versatility converge, providing an unparalleled canvas for your dream lifestyle.

**Type** : Acreage/Semi-Rural  
**Price** : Guide \$3,000,000  
**Land Size** : 68 Acres  
**View** : <https://www.ellejayne.com.au/sale/nsw/lake-macquarie-west/martinsville/residential/acreagemirural/8224068>

Designed to embrace its natural surroundings, the modern family home balances comfort and elegance. Expansive living spaces include a gourmet kitchen, multiple living zones, a games room, and a flexible library or fourth bedroom - perfect for both relaxation and entertaining. The principal suite is a serene retreat, featuring a spacious

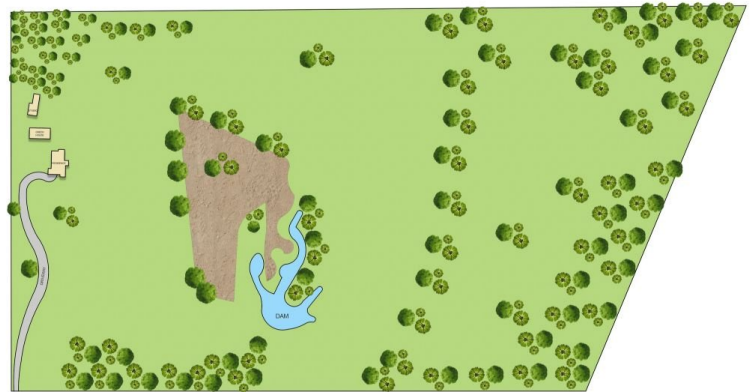


**Tyson Nicholson**  
 1300 322 366

[For full version visit the website](https://www.ellejayne.com.au)



FLOOR PLAN



SITE PLAN

This floor plan including furniture, fixture measurements and dimensions are approximate and for illustrative purposes only. BoxBrownie.com gives no guarantee, warranty or representation as to the accuracy and layout. All enquiries must be directed to the agent, vendor or party representing this floor plan.

197 Owens Road, Martinsville