



371 Newport Road Cooranbong NSW

5 🏠 2 🚗 4 🚗

Set on a quality pastured 4.5-acre estate with outstanding paddocks and brilliant American barn* all within close proximity to Watagan Central Shopping Centre and the shores of Lake Macquarie, this property offers a great option to house your family and your horses in quality surrounds.

In addition to a five-bedroom country homestead and well-fenced paddocks, the property offers elevated carport for horse floats, caravans, motorhomes etc, a split level shed with workshop, perfect for your entire family and pets.

Features include, but are not limited to:

? Five bedrooms over two levels including downstairs guest

[For full version visit the website](https://www.ellejayne.com.au)

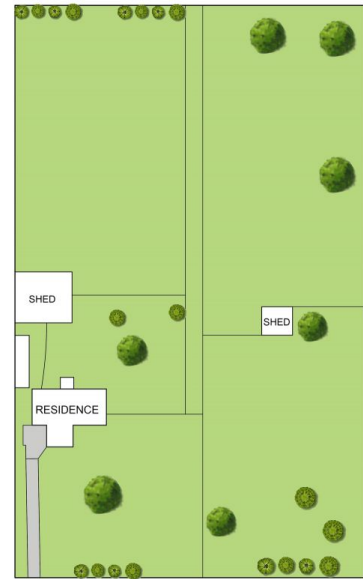
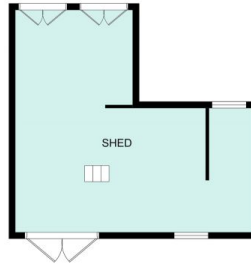
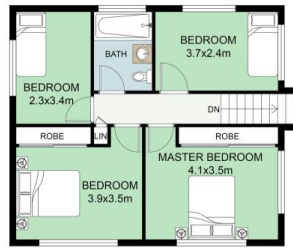
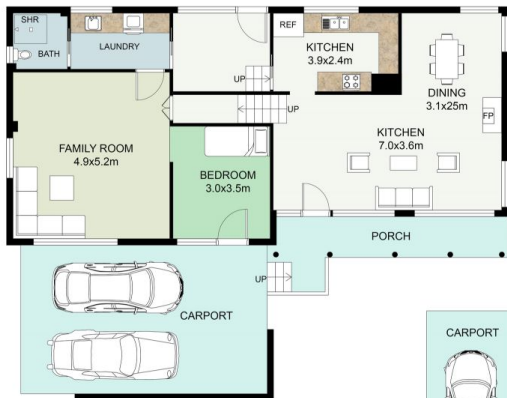
Type : Acreage/Semi-Rural
Price : Contact Agent
Land Size : 4.54 Acres
View : <https://www.ellejayne.com.au/sale/nsw/lake-macquarie-west/cooranbong/residential/acres-semirural/8673269>



Ben Wrigley
1300 322 366



Amelia Barnett
1300 322 366



This floor plan including furniture, fixture measurements and dimensions are approximate and for illustrative purposes only. BoxBrownie.com gives no guarantee, warranty or representation as to the accuracy and layout. All enquiries must be directed to the agent, vendor or party representing this floor plan.

371 Newport Road, Cooranbong